



Friday 14 February 2025

Principal's News

*Kia ora, Malo e Lelei, Talofa Lava, Ni Hao, Namaste,
Bula Vinaka, Fakaalofa Lahi Atu, Kia orana, Mauri, Greetings.*

Welcome back to all our families as the 2025 school year gets underway. Our tamariki have settled well and are enthusiastically throwing themselves into activities and learning. It has been so rewarding to see friends reunited, and our new learners finding their feet in 'big school'. Thank you to the parents and whānau who joined us at our Meet the Teacher event yesterday afternoon. Partnership with parents and whānau is crucial for a child's success and it was great to see so many of you taking the time to connect with your child's teacher and have a look around the learning spaces. Once again, I would like to take the opportunity to say thank you to all our staff for making the classrooms and school grounds ready for our eager learners.

Staffing

I am pleased to welcome Joe Stanners to our New Entrant teaching team. Joe is an experienced teacher and we look forward to working alongside her.

Property

You will have noticed a few changes over the holiday period. The asphalt pathway at the entrance to the school has been re surfaced, there is a veranda covering Puriri cloak pegs, and a new pathway through our bushwalk. External painting was also completed on the auditorium and staff room blocks. I would like to thank Don, our property manager for overseeing these projects – it's his handy work in the bush! The School Board work hard to ensure our school environment provides the best learning opportunities for our tamariki and allocate funds to worthy projects – thank you.

School Safety

Our school gates are locked between 9am and 2:55pm. Visitors are asked to go in at the office and wear a visitor's badge whilst on school grounds. We ask that children and whānau use the pedestrian crossing to navigate the traffic at key times of the day. We strongly discourage crossing the road by Newlook Lane. We endeavour to teach our children safe road practices and thank you for your support in this matter.

Attendance

You will be aware of the government's mandate regarding 1 hour of reading, writing and mathematics teaching daily. Everyday matters to a child's education. Overseas holidays in term time have a huge impact on children's progress and should be avoided if possible. First thing in the morning and last thing in the afternoon are also important times of the day. This is when teachers set expectations for the day and reflect on the day's learning. Important messages are also given at this time. Therefore, I ask that you get your child to school by 8:45am and do not pick them up before 3pm unless it is an absolute emergency. Please plan medical and dental appointments after 3pm. In doing so you will ensure less disruption for your child's learning but also to that of the other children in the classroom/pod.

Looking forward to another awesome year of learning and fun.

Ngā mihi nui
Michelle Dibben
Principal

Important Dates

Parent Teacher Interviews

Thursday 6 March

Year 6 Camp

Wednesday 26 March - Friday 28 March

House Colour Day

Thursday 10 April

Last Day of Term 1

Friday 11 April

2025 Term Dates



Term 1

3 February - 11th April

Term 2

28 April - 27 June

Term 3

14 July - 19 September

Term 4

6 October - 16

December

MPSSA (Manurewa Primary School Sports Association) Term 1 Tournaments

Swimming - Wednesday 26th February

Cricket - Wednesday 12 March

Rippa Rugby - Wednesday 19 March

Pick up and Drop off Students



Please enter and leave school daily using the Admin carpark gate or Cenotaph gate. Gates are closed at 9am and opened at the end of the day at 2.55pm. Late students use the main office and are required to sign in as 'Late'. New Entrant children must be collected from Totara pod at the end of the day.

Please do not use the office area unless you need to speak with office staff.

Thank you for your help with this.



Road Safety

Thank you for keeping our children safe by walking along the footpaths and crossing at the lights. Keep it up.



Manurewa Central School

Pita Pit every Wednesday

Charcol Chicken every Thursday

Sushi Lunches every Friday

It's simple; all you need to do is register at

<http://lunchonline.co.nz> and follow 4 easy steps to get started

1. Register an account
2. Add member/s including your name and delivery location
3. Make a payment to have funds in your account before you order

4. Select your lunch and place an order

Phone 0800 LOL LOL

Phone 0800 565 565

info@lunchonline.co.nz

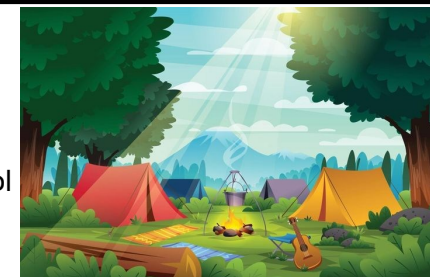
Year 6 Camp 2024

We are heading into the final stages of preparing for our Year 6 Camp. Please ensure that payment is sorted and all necessary paperwork is returned to your child's teacher ASAP.

On Wednesday 26th March, children need to arrive at school by 8:30 AM and go straight to the Auditorium.

On Friday 28th March, children will arrive back to school by 2:30 PM. Parents/Caregivers will need to collect children from the School Auditorium.

Staff will keep you informed about Camp via Dojo, our school Facebook page or email.



Swimming at School

Swimming is part of our PE curriculum.

It is expected that all children will swim.

Please ensure swimming gear is clearly named for every student. A note from a parent/caregiver is required if your child is not swimming for any reason.

Whānau teachers will let you know when each class/POD will be swimming.



Sunhats on Heads

Please ensure your child has a named sun hat or cap to be used for all activities outside the classroom. Children without hats/caps will play in shaded areas only.



LOST PROPERTY

Please help us keep track of lost property items. Please name all clothing items which may be 'taken off' during the day. This helps us return lost items to their owners. Thank you for your help with this.

MCS Online Platforms

Follow us on Facebook and check out our Website for notices.



<https://www.mancent.school.nz/>



Teachers will send an invite to join your child's class dojo. Parents, you will get an email or text with a link to accept. From there, you will create an account or sign in to an existing account to connect. Please Note: You will need to use an email address to create an account.